

# KALIBIOME SENSITIVE D-V

- Scalp microbiome regulation
- Anti hair loss
- Stimulation of anagen phase extension during hair cycle
- Anti-inflammatory and powerful antioxidant action
- Prevention of hair greying
- Inhibition of dandruff yeast hypercolonization
- Ideal for sensitive scalp and seborrheic dermatitis soothing

COMPLIANT TO COSMOS & NATRUE STANDARDS



# SCALP CARE

## MICROBIOME & IMMUNE SYSTEM REGULATION

### INSPIRED TO SCALP MICRONEEDLING TECHNIQUE

#### SCALP MICRONEEDLING PRINCIPLES

Anti hair loss and regrowth stimulation technique based on the application of microneedles in the scalp area.

The interaction between the needle and the scalp leads to the formation of the sTSLP protein in the hair follicle.

The sTSLP promotes the prolongment of the hair anagen phase, increasing its viability and avoiding its premature ageing and loss.

- Kalibiome operates on the same mechanism of the scalp microneedling technique (typically used in aesthetic medicine to promote anti hair loss action).
- The target is to prolong the anagen phase of the hair follicle through the regulation of the immune system protein sTSLP.
- The sTSLP is a protein responsible of the tissue regeneration in follicle micro-environment and is highly found during the mid anagen phase.
- Kalibiome increases significantly the formation of the sTLP.

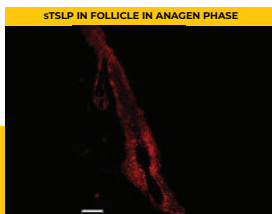
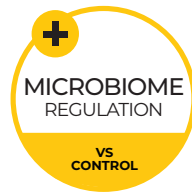


fig.1

Kalibiome increases the sTSLP by 300% vs control; the sTSLP prolongs the anagen phase and reaches its concentration peak during it (in fig.1 an anagen phase follicle biopsy is shown, with the sTSLP marked in red).



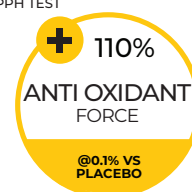
graph.1

Kalibiome regulates scalp microbiome balance and prevents pathogens colonization (*S.aureus*, *M.furfur*).

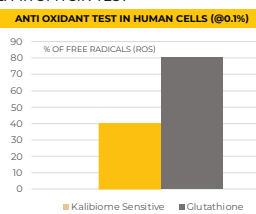


Scan the QR code to watch Kalibiome in action vs pathogens

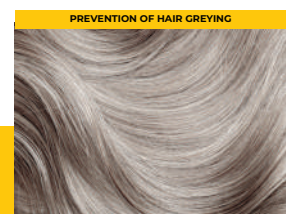
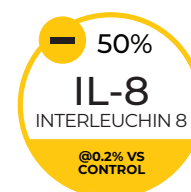
#### 1. DPPH TEST



#### 2. MITOMYCIN TEST



Compared to glutathione, Kalibiome induces a superior free radicals scavenging (mitomycin test in graph.1). When used in formulation @0.1%, it increases the anti oxidant power by 110% (DPPH test).



Kalibiome reduces by 50% the expression of IL-8 and MCP1 (pro-inflammatory proteins triggering the hair greying process and mediating UV induced inflammation).

# STIMUCAP



- Anti hair loss activity: more effective than Minoxidil
- Hair follicle protection and reduction of hair fibrosis
- Prevention of hair follicle miniaturization
- Improvement of hair health and appearance
- Shaft volumizing, moisturizing and texturizing
- Hair bulb stem cells growth stimulation
- No medical prescription required: 100% safe

FOLLICLE MINIATURIZATION PREVENTION



The combined anti-inflammatory and anti-oxidant activity of CLA GLUTATHIONE prevents the formation of the pro-inflammatory PGE2 (that leads to hair fibrosis and follicle miniaturization).

DNA ACTION ON STEM CELLS, HAIR COUNT & THICKNESS



Stimucap's DNA complex promotes hair stem cells proliferation increase (in vitro). It was proven to increase hair count and thickness, matching PRP (growth factors used after transplant) in vivo performances.

IMPROVEMENT OF HAIR APPEARANCE



The DNA films the hair shaft thanks to its polymeric structure, while the conjugated linoleic acid (CLA) embraces the shaft and increases its softness through its long carbon atom chains and unsaturation.

# ANTI HAIR LOSS

## MORE EFFECTIVE & TOLERATED THAN MINOXIDIL

In vivo tests protocol: Application once/day for 3 months (controls @ 1,2 and 3 months).

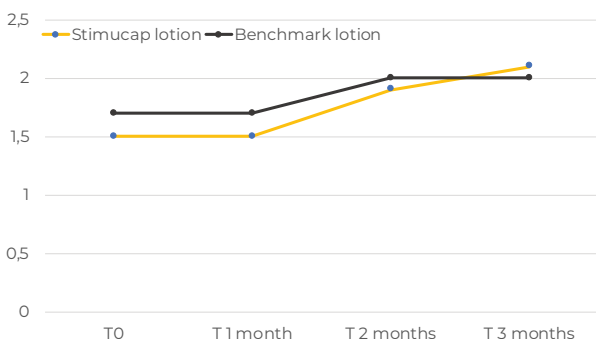
30 volunteers (age between 29 and 55 years) affected by alopecia & telogen effluvium.

15 volunteers treated with Stimucap @3% lotion, 15 with Minoxidil lotion.

### PULL TEST

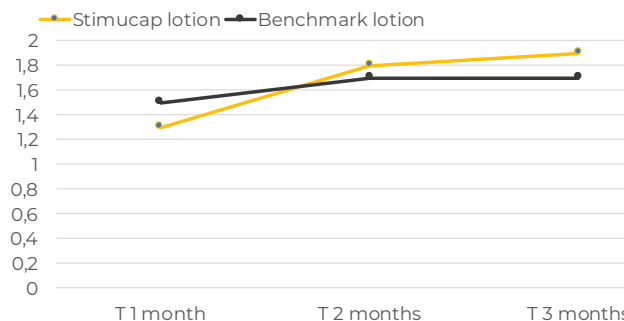
Caption Score **0** = > 6\*  
**1** = 6 ÷ 4\*  
**2** = 3 ÷ 1\*  
**3** = 0\*

\*Hair units fallen



Stimucap treated hair shows better resistance to traction than a leading benchmark, with lower hair fallen score detected after its use in lotion (@3%).

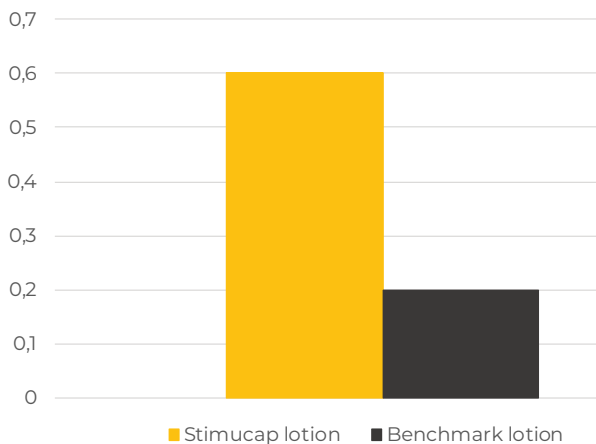
### PERCEIVED EFFICACY TEST



Besides reducing hair loss, Stimucap treatment is perceived more effective given its multiple effects (itching reduction, aesthetic parameters enhance).

### TOLERABILITY TEST

Caption Score **0** = poor tolerability  
**1** = medium tolerability  
**2** = good tolerability  
**3** = very good tolerability



Stimucap shows higher tolerance increase score than the benchmark by comparing the beginning and the end of the treatment.

## STIMUCAP TESTS HIGHLIGHTS

Stimucap's DNA has been proven to **increase the proliferation of mature stem cells** with low metabolic activity.

DNA shows **comparable results to the PRP** (benchmark active used after transplants) in **hair count (+18.0%) and thickness (+13.5%)**.

**Shampoo test:** Stimucap @0.2% promotes **hair reinforcement, reduces hair dryness, increases softness and thickness.**