



KEMICHER
FoKSNaB

Rev.08-07-2021

KEMICHER
FoKSNaB

Keratin for hair, make up (eye lashes & nails), beard care

Surface restructuring and conditioning action

Solution concentrated @ 20 %

Balanced combination of keratin derived oligopeptides & polypeptides

Ideal for rinse off/ leave on applications(shampoo, masks, conditioners)

Compatible to straight, curly and ethnic hair

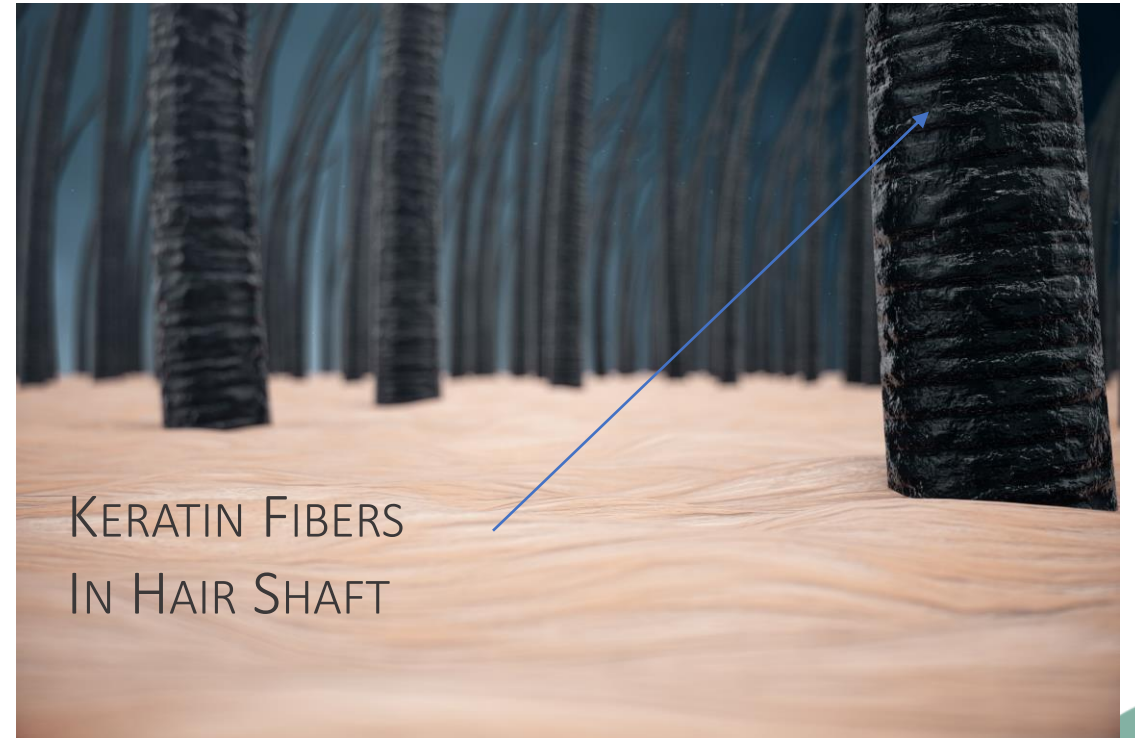


KERATIN IN COSMETICS

Constitutive component of hair, eyelashes, hairs, nails and skin

Milestone active for hair care & make up professional and daily home treatments

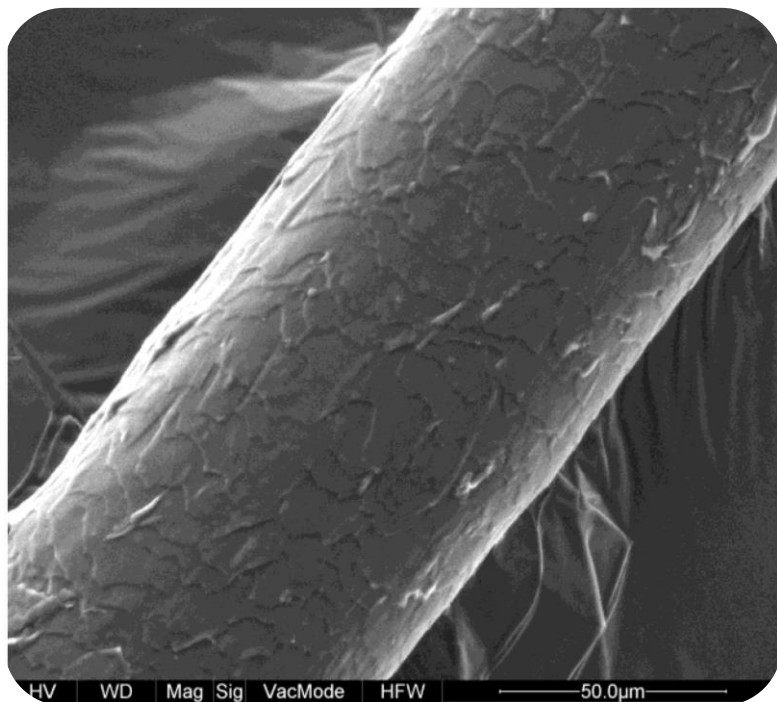
KERATIN & PERSONAL CARE APPLICATIONS



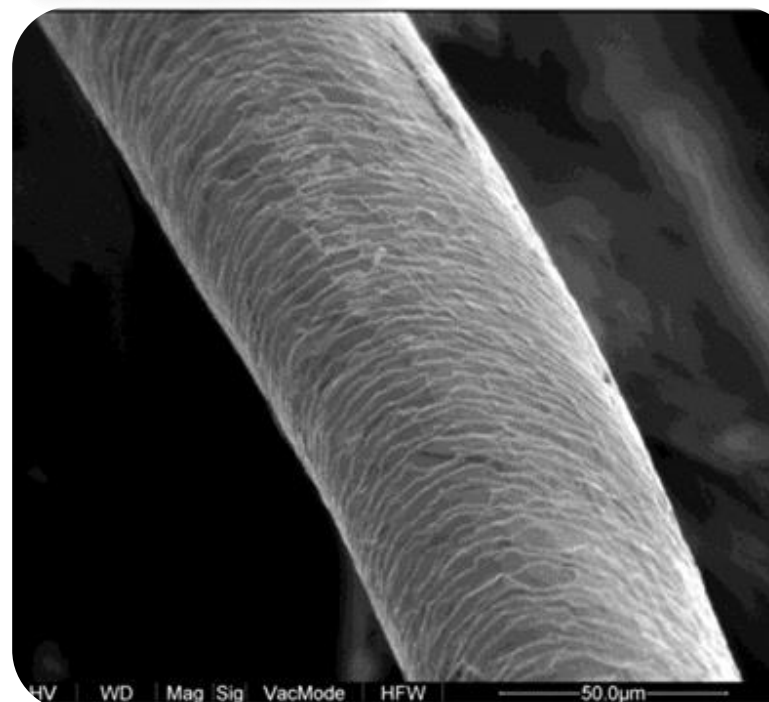
RESTRUCTURING

SHAFT LONGITUDINAL ANALYSIS

CONTROL



KEMICHER
FoKSNaB



CUTICLE RESTRUCTURING

The control sample hair surface after bleaching treatment shows uneven weft with fiberisation and non overlapped crusting

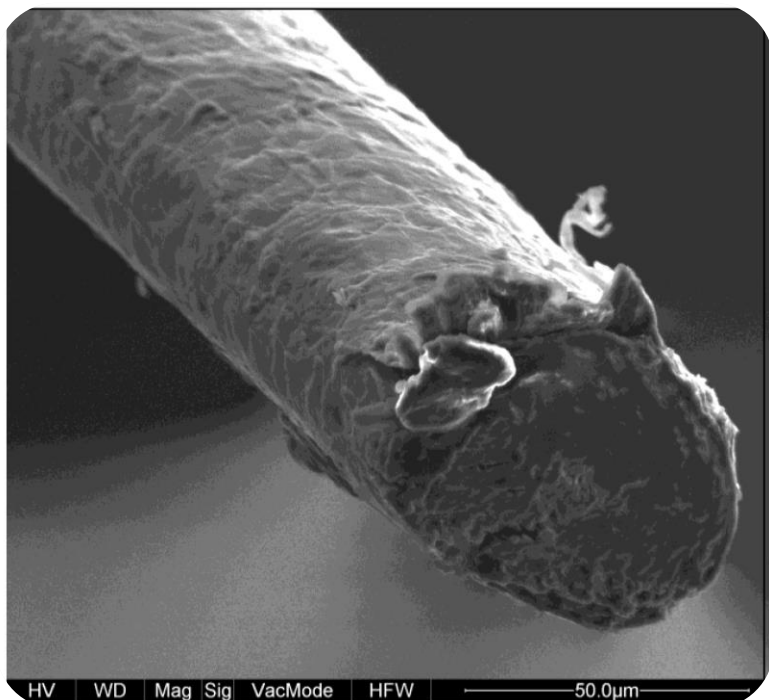
Kemicher improves the surface with significant regularization of the cuticle crusting overlapping and hair surface improvement



RESTRUCTURING

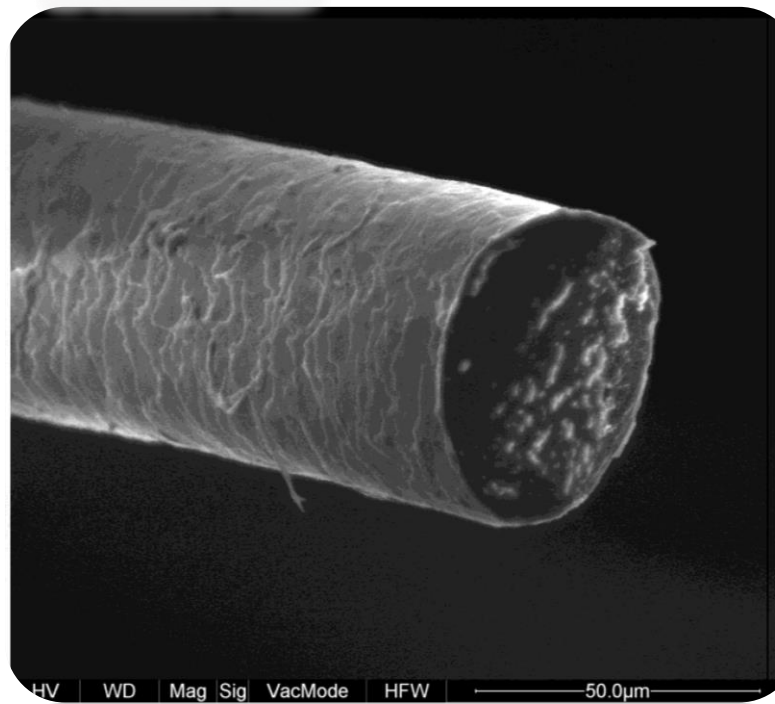
SHAFT TRANSVERSAL ANALYSIS

CONTROL



CUTICLE/CORTEX INTERFACE RESTRUCTURING

KEMICHER
FoKSNaB



The control sample after bleaching treatment shows damaged and non consistent filling of the cortex

Kemicher improves the cortex and the peri-medular area filling giving a highly organized and tidy structure

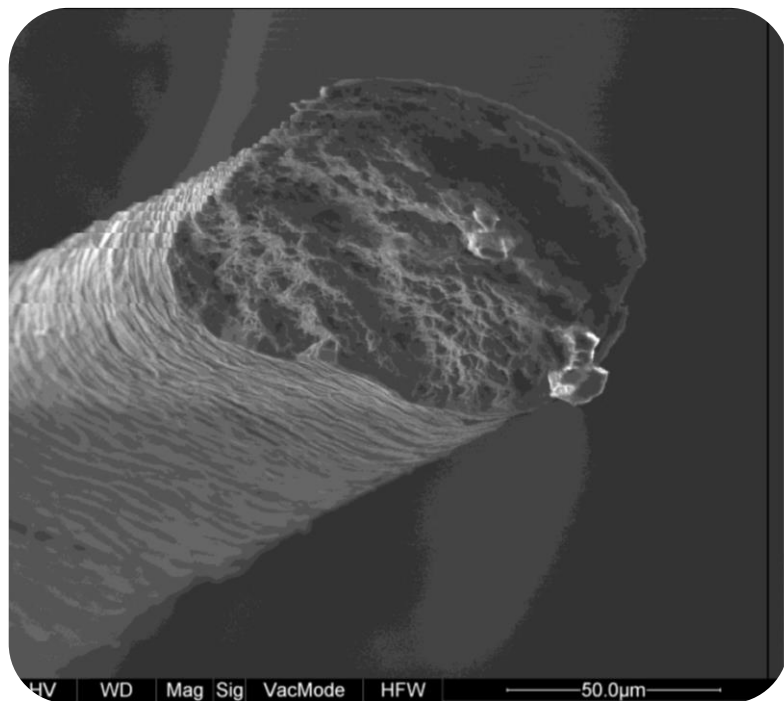
Kemicher structures more effectively than control the cortex and the medula



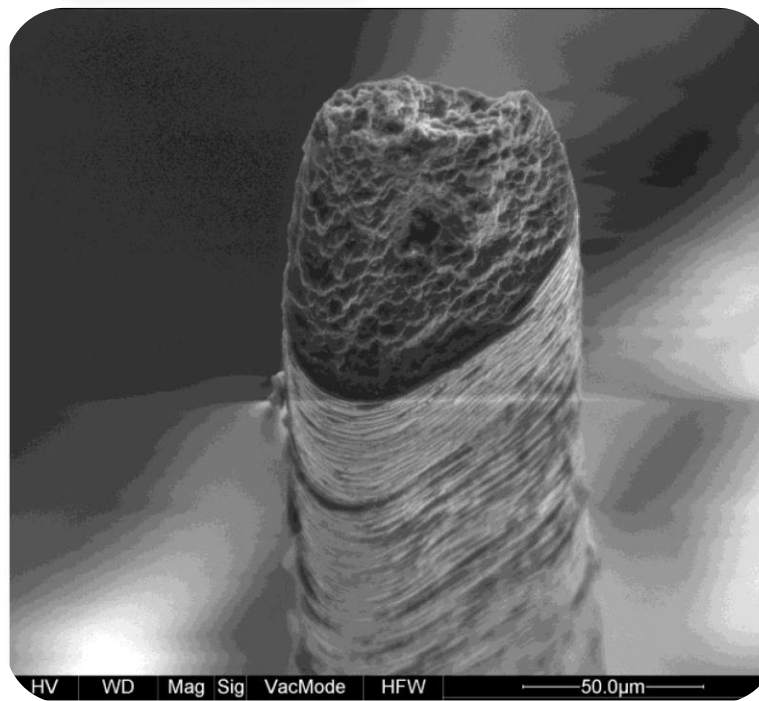
RESTRUCTURING

SHAFT TRANSVERSAL ANALYSIS
WITH LIQUID NITROGEN CONTRAST

CONTROL



KEMICHER
FoKSNaB



CUTICLE RESTRUCTURING

The control sample after bleaching treatment shows damaged and non consistent filling of the cortex

Kemicher improves the cortex and the peri-medular area filling, giving a highly organized and tidy structure

Kemicher structures more effectively than control the cortex and the medula



RECOMMENDED APPLICATIONS

RINSE OFF & LEAVE ON

- Shampoo & low shampoo
(substantivity, volumizing, repairing, detangling, moisturizing, luminosity increase & nourishing)
- Leave-on & rinse off conditioners
(restructuring, conditioning, shaft protection, luminosity increase, volumizing, straightener/hair dryer damage prevention)
- Professional treatments
*(Brazilian keratin treatments, hair keratin reconstruction, split end repair, bleaching and dyes **post-treatments**)*

**IDEAL FOR
STRAIGHT, CURLY AND ETHNIC HAIR**



ALTERNATIVE APPLICATIONS

EYE LASHES & NAILS CARE

is able to:

- increase eye lashes softness
- provide volumizing action
- moist the eyelash shaft with filming features
- Nourish and restructure damaged nails

Ideal for mascara, eyelashes primers and serums & Nails care



ALTERNATIVE APPLICATIONS

BEARD CARE

Kemicher is able to promote the beard softness, moist the hairs through its filming features and increase the hairs volume

Ideal for beard density increase, volumizing and moisturizing treatments



claims

- Hair restructuring and reconstruction (keratin disulphide bonds regeneration)
- Volumizing and moisturizing
- Luminosity increase
- Advanced hair, eyelashes and nails keratin treatments

